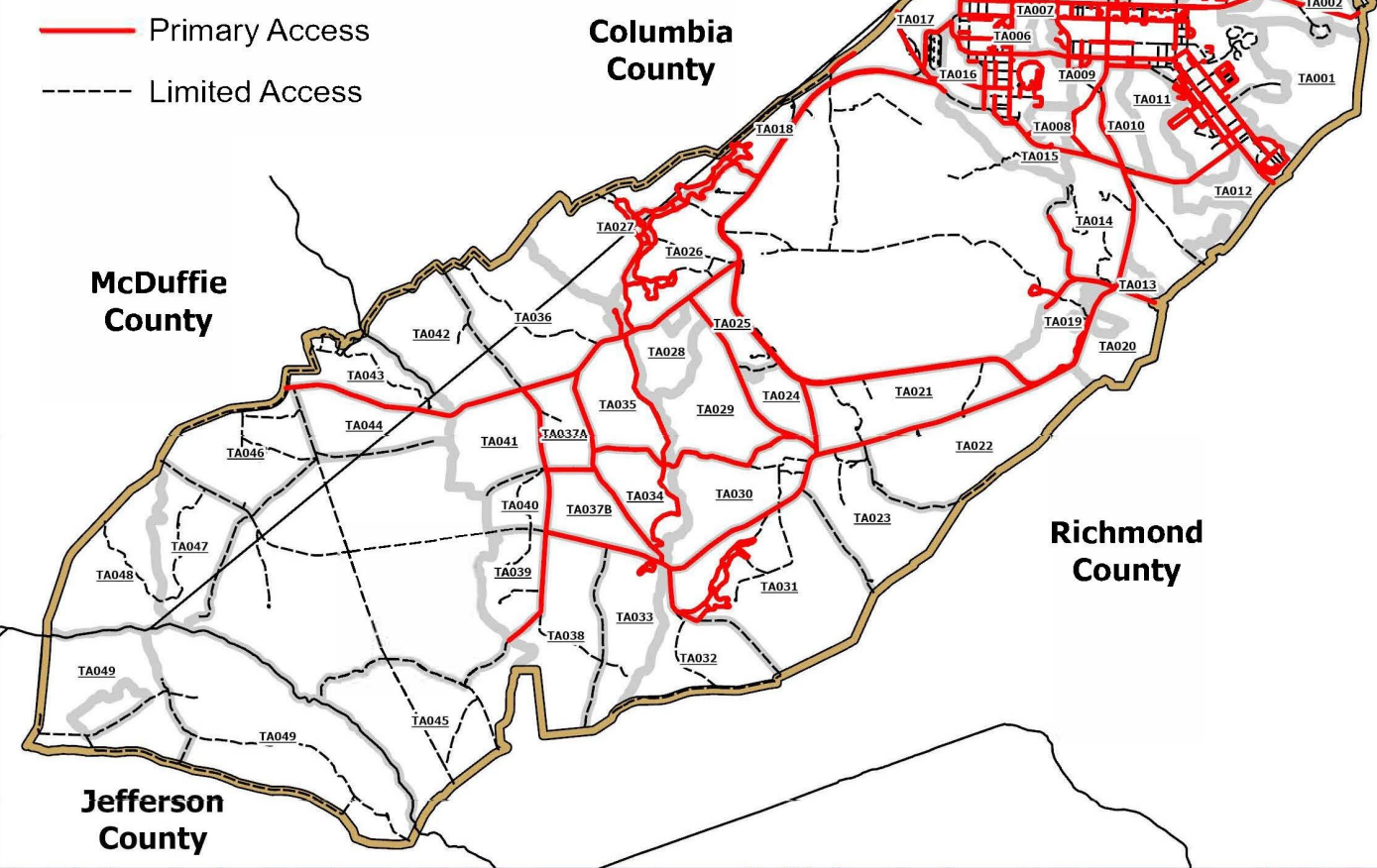


Road Classification Inset Map

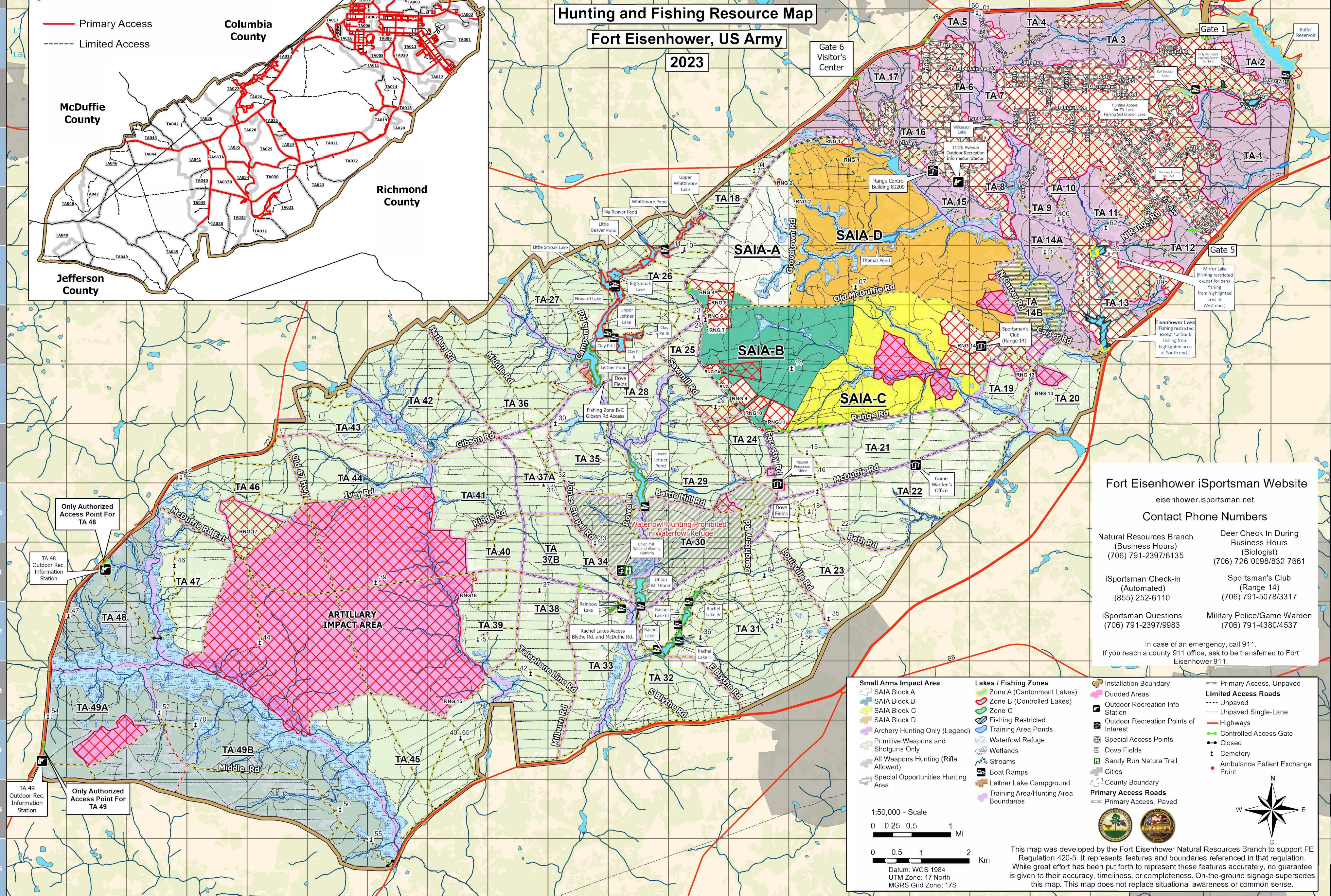
- Primary Access
- - - - Limited Access



Hunting and Fishing Resource Map

Fort Eisenhower, US Army

2023



Fort Eisenhower iSportsman Website

eisenhower.isportsman.net

Contact Phone Numbers

Natural Resources Branch (Business Hours) (706) 791-2397/6135	Deer Check In During Business Hours (Biologist) (706) 726-0098/832-7661
iSportsman Check-in (Automated) (855) 252-6110	Sportsman's Club (Range 14) (706) 791-5078/3317
iSportsman Questions (706) 791-2397/9983	Military Police/Game Warden (706) 791-4380/4537

In case of an emergency, call 911.
If you reach a county 911 office, ask to be transferred to Fort Eisenhower 911.

Small Arms Impact Area

- SAIA Block A
- SAIA Block B
- SAIA Block C
- SAIA Block D
- Archery Hunting Only (Legend)
- Primitive Weapons and Shotguns Only
- All Weapons Hunting (Rifle Allowed)
- Special Opportunities Hunting Area

Lakes / Fishing Zones

- Zone A (Cantonment Lakes)
- Zone B (Controlled Lakes)
- Zone C
- Fishing Restricted
- Training Area Ponds
- Waterfowl Refuge
- Wetlands
- Streams
- Boat Ramps
- Leitter Lake Campground
- Training Area/Hunting Area Boundaries

Installation Boundary

- Installation Boundary
- Dudded Areas
- Outdoor Recreation Info Station
- Outdoor Recreation Points of Interest
- Special Access Points
- Dove Fields
- Sandy Run Nature Trail
- Cities
- County Boundary

Primary Access Roads

- Primary Access, Paved
- - - - Primary Access, Unpaved
- - - - Limited Access Roads
- - - - Unpaved
- - - - Unpaved Single-Lane
- - - - Highways
- - - - Controlled Access Gate
- - - - Closed
- - - - Cemetery
- - - - Ambulance Patient Exchange Point

1:50,000 - Scale

0 0.25 0.5 1 Mi

0 0.5 1 2 Km

Datum: WGS 1984
UTM Zone: 17 North
MGRS Grid Zone: 17S

This map was developed by the Fort Eisenhower Natural Resources Branch to support FE Regulation 420-5. It represents features and boundaries referenced in that regulation. While great effort has been put forth to represent these features accurately, no guarantee is given to their accuracy, timeliness, or completeness. On-the-ground signage supersedes this map. This map does not replace situational awareness or common sense.